



MARCO POLO
JINJIANG

PRESS KIT



For media enquiries, please contact: Digital Marketing & Communications Manager, Ivy Cai
T +86 3666 6666 E ivy.cai@marcopohotels.com



CONTENTS

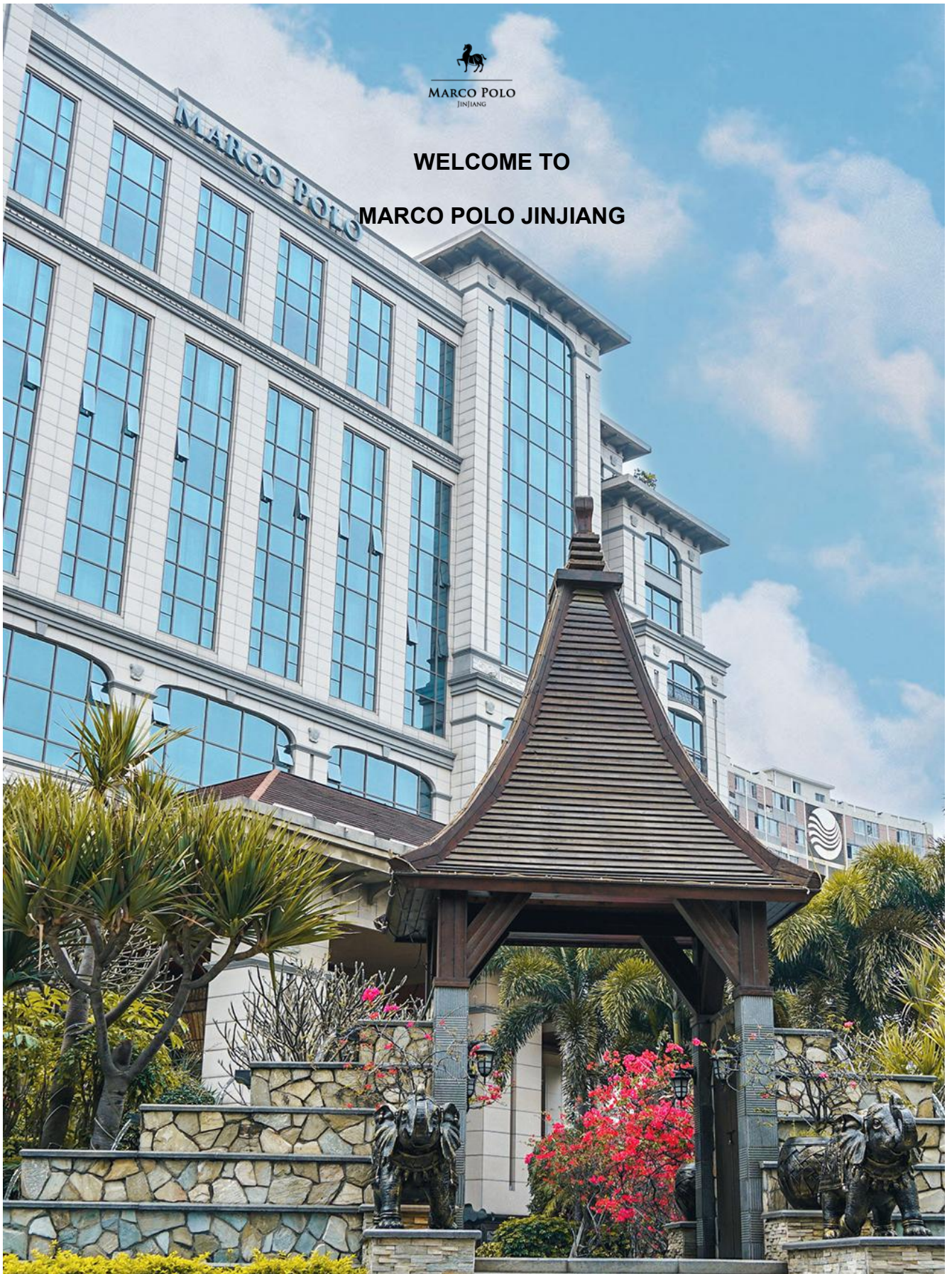
- About [Marco Polo Jinjiang]
- General Manager, [Baris Bolat]
- Accommodations
- Dining and Bar Experiences
- Meetings and Events
- Health and Leisure
- Awards and Recognitions





MARCO POLO
JINJIANG

**WELCOME TO
MARCO POLO JINJIANG**



For media enquiries, please contact: Digital Marketing & Communications Manager, Ivy Cai
T +86 3666 6666 E ivy.cai@marcopolohotels.com

Marco Polo Hotels' 5th hotel in China and the latest addition to the Group's portfolio, Marco Polo Jinjiang is the first 5 star deluxe international hotel to open in Quanzhou, offering premium accommodations and the highest standards of service for business as well as leisure travelers.

Architecture and Design

The overall style is defined as a new Nanyang architectural style hotel combining Italian style and Nanyang architectural style. Italianate encapsulates the meaning of the general style of the Greco-Roman tradition, which developed into an awakening to human dignity and scientific values. In the manufacturing of brand capital Jinjiang, do not have meaning. One of the notable characteristics of Jinjiang's economic development is that it has many well-known brands in China and even the world. The unique approach to building a brand capital is particularly important in terms of inclusion and creativity.

Marco Polo Jinjiang consists of the main building and the side building. The exterior wall of the main building adopts dry hanging structure, the wall column is huge and thick, the wall with doors and Windows and holes are arranged to reduce the sense of heaviness, the whole building main body is symmetrical and towering, the combination of virtual and real, giving people a sense of awe and mystery, reflecting the majesty of Romanesque architecture. And at the entrance to the Nanyang style, one and a half layer of inclined housetop the house door, and low-rise buildings skirt building, by the end of the 19th century, the early twentieth century European colonial style building with lingnan the mixture of arcade building, architectural collectively called Nanyang style building, is the important embodiment of Eurasia mixed Nanyang culture, also meet the hotel inclusive of overseas Chinese around the world travelers and comfort.

The columns of the atrium alternate rhythmically. The lobby bar has natural lighting, glass skylight 18 meters high, spacious and bright. The central island circular flower table arrangement, echoing the background wall, creates a comfortable romantic atmosphere in the larger interior space. The elegant central hall contrasts with the dignified exterior, while the symmetrical interior and exterior halls maintain the sense of balance of classical architecture.

End



GENERAL MANAGER, BARIS BOLAT



Baris brings 16 years of global operating expertise with luxury hotels such as Rosewood and Starwood in a variety of postings in Turkey, the United States, Australia, and China. He has been the Director of Rooms at Niccolo Chengdu since 2018.

Baris began his career in Rooms operations and has worked in a number of on-property positions world wide. In his free time, he enjoys cycling, movies and traveling. He is a dedicated hotelier with a comprehensive understanding of the China market and is able to communicate in conversational Mandarin. With his rigorous attitude, and a dedicated focus on service excellence, we are certain that Baris will be a fantastic asset in leading Marco Polo Jinjiang to the next level in a highly competitive market.

End



MARCO POLO
JINJIANG

ACCOMMODATIONS



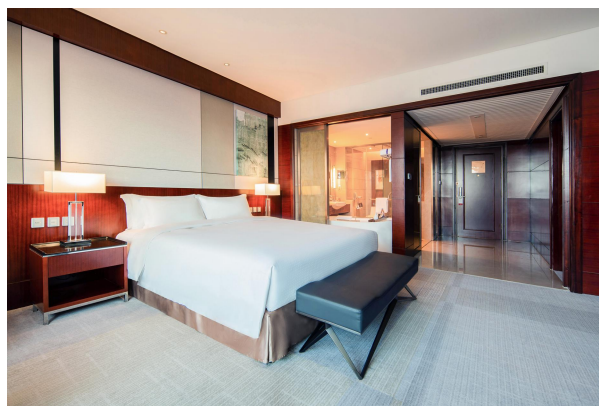
Marco Polo Jinjiang is home to 280 well-appointed rooms and suites where elegance and comfort come as a standard fitting. It is the preferred hotel of today's business and leisure travelers.

Ranging from the comfortable Superior Rooms to the Continental Club Rooms, guests will never have to compromise with their choice of room. The space and comfort of every room and suite is further enhanced by the hotel's attentive service.

Guestrooms

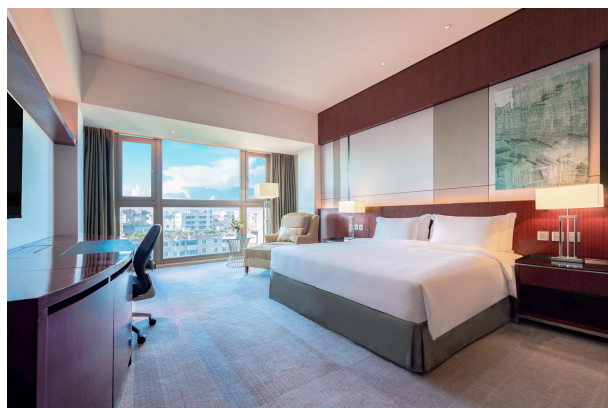
SUPERIOR ROOM

Exquisitely designed and furnished city view rooms located on the 5th to 6th floor of the hotels with an average room size of 35 sq m / 376 sq ft to 43 sq m / 462 sq ft.



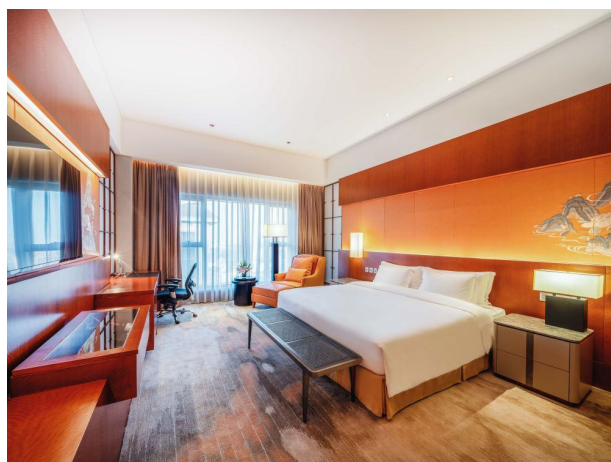
DELUXE ROOM

Located on 7th to 9th floor of the hotel, the Deluxe Rooms are elegantly appointed and offering city views. The 32sq m / 344 sq ft to 39 sq m / 419 sq ft size room.



CONTINENTAL SUPERIOR ROOM

Luxuriously designed and furnished with superior amenities, the Continental Club rooms are located on the 10th to 12th floor of the hotel with an average size of 32 sq m / 344 sq ft to 39 sq m / 419.6 sq ft. Guests staying in these Continental Club rooms enjoy access to the exclusive Continental Club Lounge with premium services and benefits.



SUITE

SPECIALTY SUITE

The Specialty Suites pamper guests with comfortable living rooms, well facilities and considerate service. Flexibility in design enables the suite to be divided into one or two bedrooms.



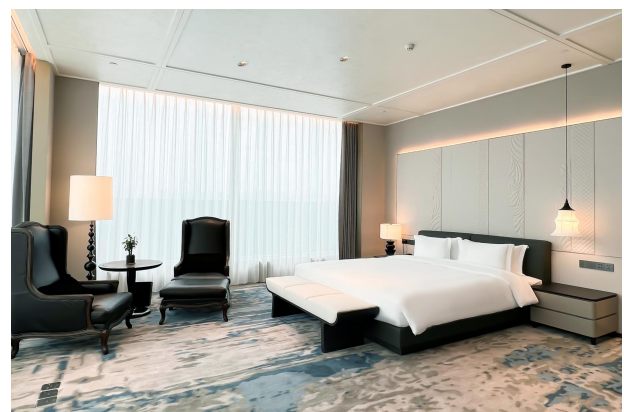
CONTINENTAL PREMIERE SUITE

Located on the 15th floor of the hotel and sprawling at 58 sq m/624 sq ft to 90 sq m/968 sq ft, the specialty Suites pamper guests with comfortable living rooms, well facilities and considerate service. Flexibility in design enables the suite to be divided into one or two bedrooms.



MARCO POLO SUITE

Located on the 15th floor of the hotel and sprawling at 100 sq m/1076 sq ft, the Marco Polo Suite pamper guests with comfortable living rooms, well facilities and considerate service. Flexibility in design enables the suite with one bedrooms.



Continental Club

The continental Club offers the ultimate in luxury accommodation and personalized service, combining contemporary elegance and refinement with the highest standards of professionalism.

Exclusive privileges for guests include:

Butler Service

On arrival, a guest relations officer will personally escort you to the Club Lounge, where your check-in will be handled smoothly and quickly.

Rich Facilities

Personalised meetings are available for Club guests at the multi-functional conference room. For your entertainment, visit our private movie theatre and relax in one of six reclining leather chairs while watching one of your favourite classics in full stereo surround sound.

Complimentary Breakfast

A continental breakfast is served every morning in the Club Lounge from 6.30 am to 10:30 am.

Wake-up calls

Wake-up calls are made with personally delivered complimentary tea, coffee or other hot beverages to the guest's room.

Newspaper and Fresh Fruits

Every day, a selection of fresh tropical fruits is replenished and delivered to the guest's room together with an international newspaper.

Complimentary Beverages and Canapés

Throughout the day, guests can help themselves to fruit juices, soft drinks, tea and coffee at the Club Lounge. In the early evening from 6 pm to 8 pm, enjoy canapés, refreshing cocktails and champagne on the house.

For reservations, please call +86 3666 6666 or e-mail resv.jjn@marcopolohotels.com.

End



MARCO POLO
JINJIANG

**DINING AND BAR
EXPERIENCES**



For media enquiries, please contact: Digital Marketing & Communications Manager, Ivy Cai
T +86 3666 6666 E ivy.cai@marcopolohotels.com

LOBBY LOUNGE

The one of the best conversation place with a warm, friendly atmosphere for all patrons. Serving afternoon tea, drinks, cocktails, wines, beers, tea, coffee and snacks.

Operating hours 12:00-22:00



CAFÉ MARCO

Located on the second floor, Marco Polo's signature restaurant with open kitchens, featuring Asian and international cuisine. Where food meets fashion. Its stylish environment, innovative breakfast buffet, and sumptuous a-la-carte selection are perfect for after-shopping dining pleasure.

Operating hours 06:30-22:00



CONTINENTAL CLUB LOUNGE

Situated on the 11th floor, the Continental Club offers the in luxury and personalized service for the discerning business traveller.

Individual butler service, separate business facilities, boardroom and a lavishly outfitted private lounge, serving complimentary breakfast, afternoon tea and cocktails.

Operating hours 07:30-21:30



IN-ROOM DINING

Are you keen on a completely relaxing holiday? Are you unwilling to leave your comfortable bed after a tiring journey? Our In-room dining offers you a wide range of options to meet your discerning taste buds without leaving your room.

Operating hours 10:30-22:30



For reservations, please call +86 3666 6666 or e-mail resv.jjn@marcopolohotels.com.

End

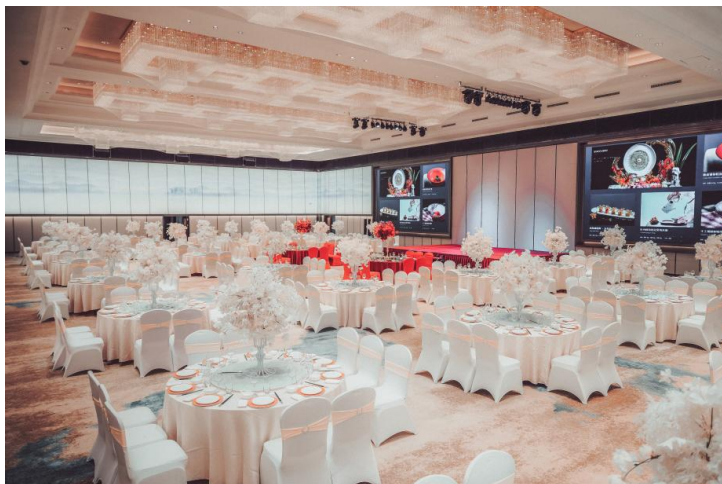


MARCO POLO
JINJIANG

EVENTS &
MEETINGS



The hotel has extensive meeting and banquet facilities. Han Tan Palace Ballroom and 5 multi-function rooms can accommodate up to 1,200 guests and provide the ideal venue for corporate meetings and glittering social events.



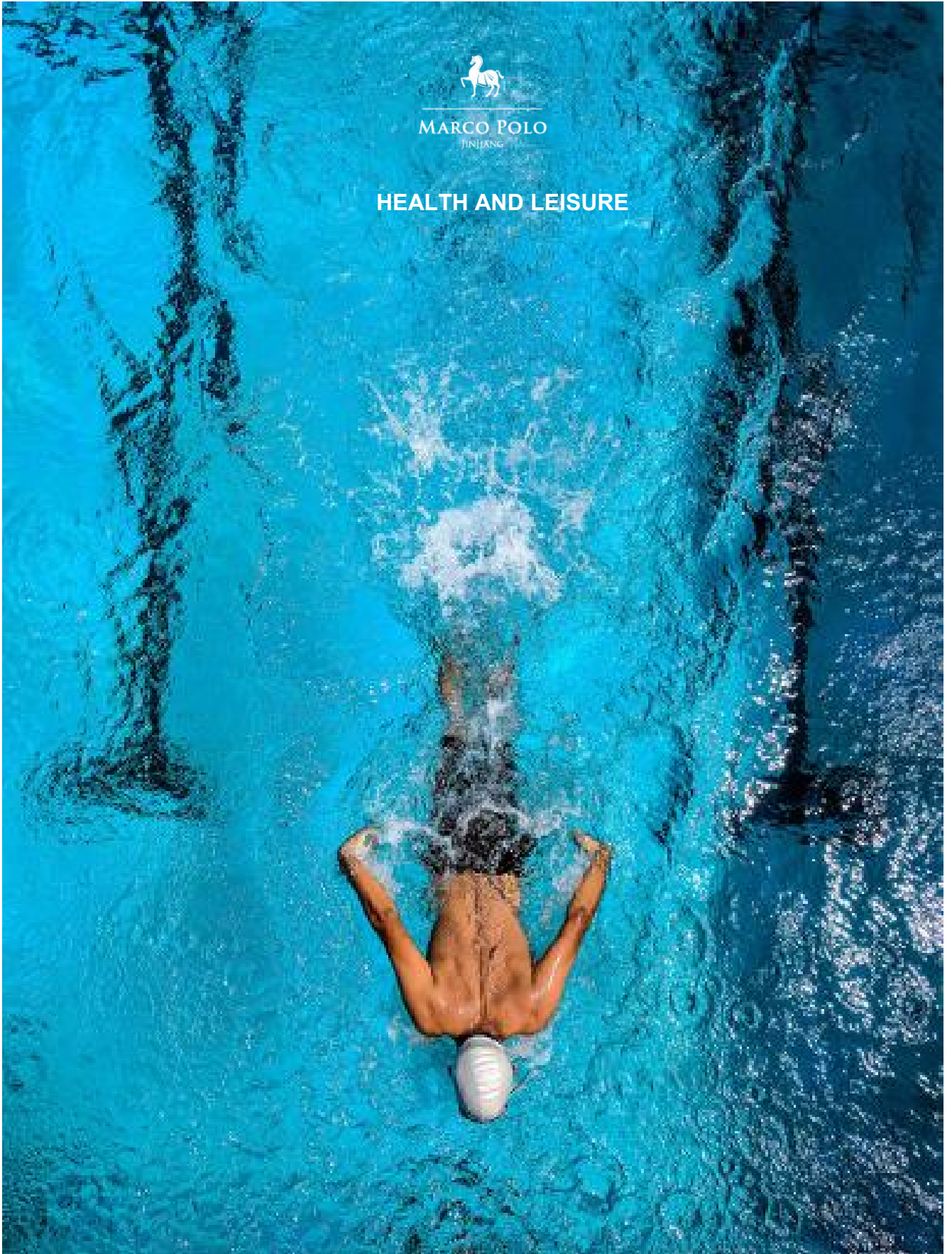
For reservations, please call +86 3666 6666 or e-mail resv.jjn@marcopolohotels.com.

End



MARCO POLO
JINHANG

HEALTH AND LEISURE



Marco Polo Jinjiang has been designed and furnished to a high standard and whether you are staying with us for business or pleasure; we have the facilities that would help you pass the day away in a relaxed surrounding.

SWIMMING POOL

Relax and enjoy the warmth of the sun whilst sipping chilled fruit juice in the hotel's outdoor swimming pool and Jacuzzi.

Operating hours 06:00-22:30



HEALTH AND FITNESS CENTRE

Spanning over 396 sq m, the fitness centre located on the 7th floor of the hotel is extensively equipped to international standard.

Operating hours 06:00-23:00



End



AWARDS AND RECOGNITIONS

2023

- Ctrip Reputation
Jinjiang Luxury Hotel List
- Annual Award of Platinum-traveller
Business Hotel of the Year

2022

- TRAVEL & LEISURE
Best Executive Lounge
- SPLENDEUR & HOTEL GOLD AWARD
Best Serviced Business Hotel

2021

- The 13th China Best Hotel Award
City Landmark Charm Hotel
- The 8th China Hotel New Power Media Award
Business Travel Preferred Hotel Award